

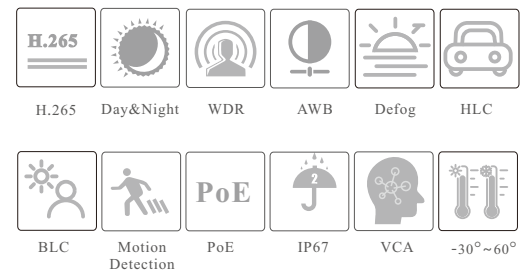
CAMERA

TD-9564E3B-A

6MP IR Water-Proof Turret Network Camera



- H.265+/H.265/H.264+/H.264/MJPEG coding
- Max. resolution: 3296 × 1856
- ICR auto switch, true day / night vision
- 20 ~ 30m IR night view distance
- 3D DNR, true WDR, HLC, BLC, Defog, Smart IR and ROI coding
- Support image distortion correction
- Built-in micro SD card slot, up to 256GB
- DC12V/PoE power supply
- IP 67 ingress protection
- Support three streams
- Support remote monitoring by smart phones & tablet PCs with iOS and Android OS
- Support P2P function
- Multiple smart events can be enabled at the same time
- Dual system backup

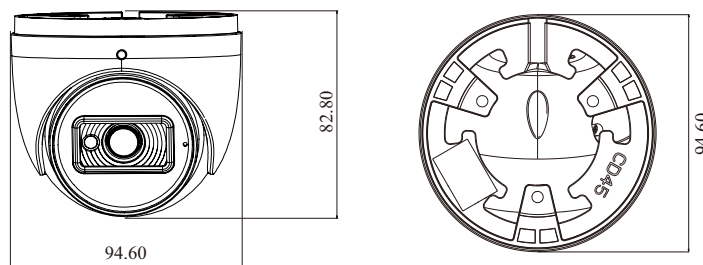


SPECIFICATIONS

Specifications	Model	TD-9564E3B-A		
Camera				
Image Sensor	1 / 2.5 "CMOS			
Image Size	3296 × 1856			
Electronic Shutter	1 / 4 s ~ 1 / 100000 s			
Iris Type	Fixed Iris			
Min. Illumination	0.008 lux@F1.6,AGC ON; 0 lux with IR			
Lens	2.8 mm@F1.6, horizontal FoV: 104°; vertical FoV: 54.5°; diagonal FoV:130° 3.6 mm@F1.6, horizontal FoV: 79°; vertical FoV: 39°; diagonal FoV:96°			
Focus	Fixed			
Lens Mount	M12			
Day & Night	ICR			
Wide Dynamic Range	120dB			
BLC	Yes			
HLC	Yes			
Defog	Yes			
S/N ratio	≥50dB			
Digital NR	3D DNR			
Angle Adjustment	Pan: 0°~360°; Tilt:0°~75°; Rotation: 0°~360°			
Image				
Video Compression	Main stream: H.265+ / H.265 / H.264+ / H.264 Sub stream: H.265+ / H.265 / H.264+ / H.264 / MJPEG Third stream: H.265+ / H.265 / H.264+ / H.264 / MJPEG			
H.264 Compression Standard	Baseline Profile/Main Profile/High Profile			
Resolution	6MP(3296×1856), 6MP(3200×1800), 5MP(2880×1624), 4MP(2688×1520), 1080P(1920×1080), 720P(1280×720), D1, VGA(640×480), 640×360, CIF, 480×240			
Main Stream	6MP/5MP/4MP/1080P(60Hz : 1 ~ 30fps; 50Hz: 1~25fps)			
Sub Stream	720P/D1/VGA/640×360/480×240/CIF(60Hz : 1 ~ 30fps; 50Hz: 1~25fps)			
Third Stream	D1/CIF/480×240 (60Hz : 1 ~ 30fps; 50Hz: 1~25fps)			
Bit Rate	64 Kbps ~ 10 Mbps			
Bit Rate Type	VBR / CBR			
Audio Compression	G711A / U			
Image Settings	ROI, Saturation, Brightness, Hue, Contrast, Wide Dynamic, Sharpness, Image Mirror, Image Flip, NR, etc. adjustable through client software or web browser			
ROI	Each ROI to be configured separately			
Intelligent Analytics				
Smart Event	Line crossing, region intrusion/entrance/exiting (human/vehicle classification) loitering detection, illegal parking detection, abandoned/ missing object detection			
Statistics	Target counting by line/area, heat map			
Exception Detection	Scene change, video blur and abnormal color detection, audio exception			
Face Detection	Face detection and face capture			
Video Metadata	Simultaneously captures human body, motor vehicle and non-motor vehicle and extracts 13 human features, 4 motor vehicle features and 1 non-motor vehicle feature			
DORI Distance				
Lens	Detect	Observe	Recognize	Identify
2.8mm	71m(232ft)	28m(93ft)	14m(46ft)	7m(23ft)
3.6mm	102m(334ft)	41m(133ft)	20m(67ft)	10m(33ft)
Interfaces				
Network	RJ 45 10M/100M self-adaptive Ethernet port			
Video Output	No			
Audio	1CH audio input; 1CH audio output; 1 CH built-in MIC			
Storage	Built-in micro SD card slot; up to 256GB			
Reset	Yes			
Alarm	No			
Functions				
Remote Monitoring	Web Browser/TVT NVMS2.0/NVR/mobile APP			
Web Browser	Chrome 89.0+/Edge 89.0+/Firefox 87.0+/Safari 14.0+			
Online Connection	Support simultaneous monitoring for up to 10 users; Support multi-stream real time transmission			

Network Protocol	UDP, IPv4, IPv6, DHCP, NTP, RTSP, RTP, RTMP, RTCP, PPPoE, DDNS, SMTP, FTP, SNMP, HTTP, HTTP POST, 802.1x, UPnP, HTTPS, P2P, QoS
Interface Protocol	ONVIF Profile S/G/M/T
API&SDK	Yes
Storage	Network remote storage; micro SD card storage
Smart Alarm	Motion detection, SMD, SD card error, SD card full, IP address conflict, network disconnection, audio alarm
General Function	Watermark, video mask, heartbeat, image distortion correction, corridor pattern, disarming, ANR, cloud upgrade
Security	Video encryption, firmware encryption, HTTPS encryption, configuration encryption, illegal login lock, IP address filtering, 802.1x authentication, basic and digest authentication for HTTP/RTSP/API service
PoE	Yes, IEEE802.3af
IR Distance	20~30 m
Ingress Protection	IP 67
Others	
Power Supply	DC12V/PoE
Power Consumption	< 7W
Storage Conditions	- 30 °C ~ 65 °C (-22°F ~ 149°F), Humidity: less than 95 % (non-condensing)
Operating Conditions	- 30 °C ~ 60 °C (-22°F ~ 140°F), Humidity: less than 95 % (non-condensing)
Dimensions (mm)	Ø 94.6 × 82.8
Weight (net)	Approx. 0.46KG
Installation	Ceiling mounting; Wall mounting
Certificate	CE, FCC
Environmental Protection	Directive EU RoHS, WEEE(2012/19/EU), directive 94/62/EC and REACH(EC1907/2006)

DIMENSIONS



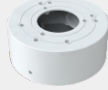
AVAILABLE MODEL

Available Model	TD-9564E3B-A(D/PE/AR2)	Fixed lens
-----------------	------------------------	------------

AVAILABLE ACCESSORIES



TD-YXH0301



TD-YXH0104



TD-YZJ0203



TD-YZJ0213



TD-YXH0301+
TD-YZJ0810



TD-YXH0301+
TD-YZJ0406+TD-YZJ0501



TD-YXH0301+
TD-YZJ0406+TD-YZJ0601



TD-YZJ0213+
TD-YZJ0501



TD-YZJ0213+
TD-YZJ0601